



Kent Associate Research School Launch

3rd March 2022

Today

- **Introduction** - Maria Cunningham, EEF Regional Lead for London and South East.
- **Work of Research Schools** - Shaun Allison, Director of Durrington Research School
- **How will the Kent Associate School support Kent schools?**
- Iain Witts & Laura Howling, Kent Associate Research School



Our mission

The Education Endowment Foundation and the Research Schools Network are dedicated to breaking the link between family income and educational achievement

214

EEF-funded
projects

children and young
people reached

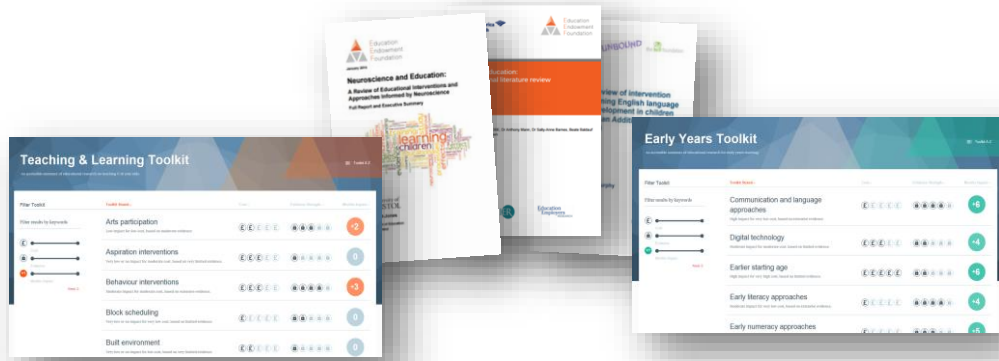
1,700,000

**£123
million**

total funding
committed to date

15,000+

schools, nurseries,
colleges involved

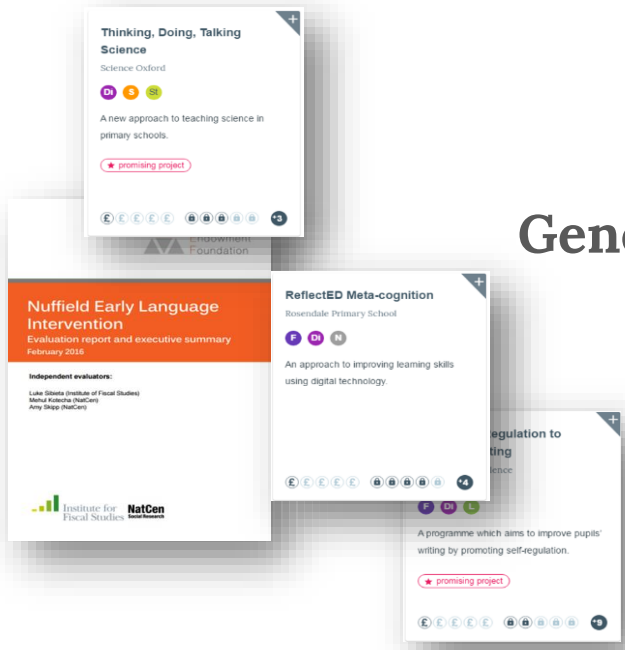


Synthesis



Generation

Mobilisation





Preparing for Literacy

Early Years & Primary

Seven recommendations to support improving early language and literacy

[Download PDF](#)



Improving Literacy in Key Stage 1

Primary

Eight recommendations to support the literacy of 5-7 year-olds

[Download PDF](#)

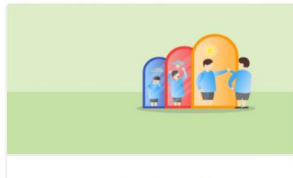


Improving Literacy in Key Stage 2

Primary

Seven recommendations to improve literacy teaching for 7-11 year-olds

[Download PDF](#)

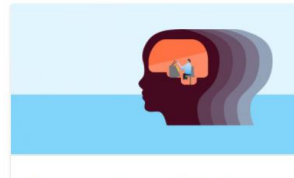


Improving Social and Emotional Learning in Primary Schools

Primary

Six recommendations for improving social and emotional learning in primary schools

[Download PDF](#)



Metacognition and Self-regulated Learning

Primary & Secondary

Seven recommendations for teaching self-regulated learning & metacognition

[Download PDF](#)

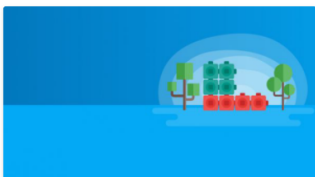


Improving Behaviour in Schools

Primary & Secondary

Six recommendations for improving behaviour in schools

[Download PDF](#)



Improving Mathematics in the Early Years and Key Stage 1

Early Years & Primary

Five recommendations to support practitioners in developing the maths skills of 3-7 year-olds

[Download PDF](#)

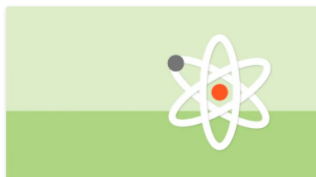


Improving Mathematics in Key Stages 2 and 3

Primary & Secondary

Eight recommendations to improve outcomes in maths for 7-14 year olds

[Download PDF](#)



Improving Secondary Science

Secondary

Seven recommendations for improving science in secondary schools

[Download PDF](#)



Using Digital Technology to Improve Learning

Primary & Secondary

Four recommendations on using digital technology to improve children's learning

[Download PDF](#)



Putting Evidence to Work - A School's Guide to Implementation

Early Years, Primary & Secondary

A guide to implementation applicable to any school improvement decision

[Download PDF](#)



Making Best Use of Teaching Assistants

Primary & Secondary

Guidance to help primary and secondary schools make the best use of TAs

[Download PDF](#)

Using evidence

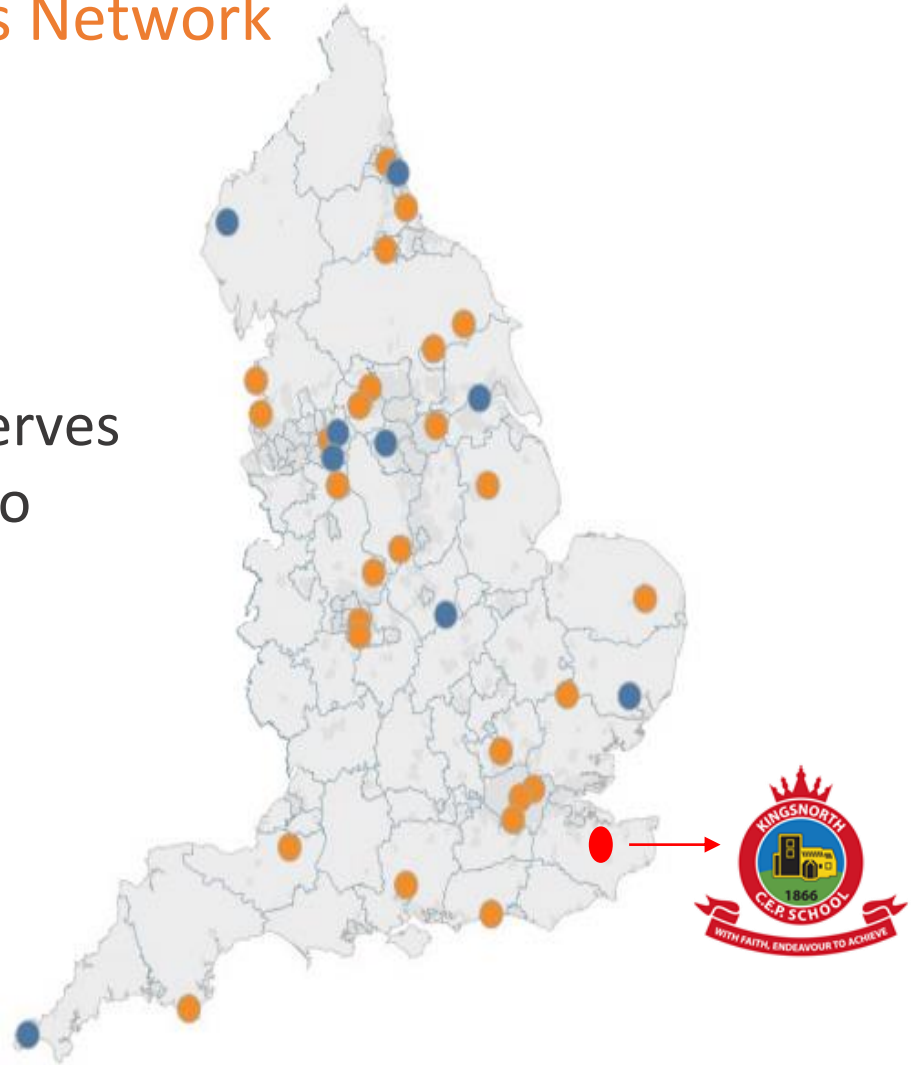


Evidence provides 'best bets' to help teachers and leaders to make more informed decisions about what to do (and what to stop doing).

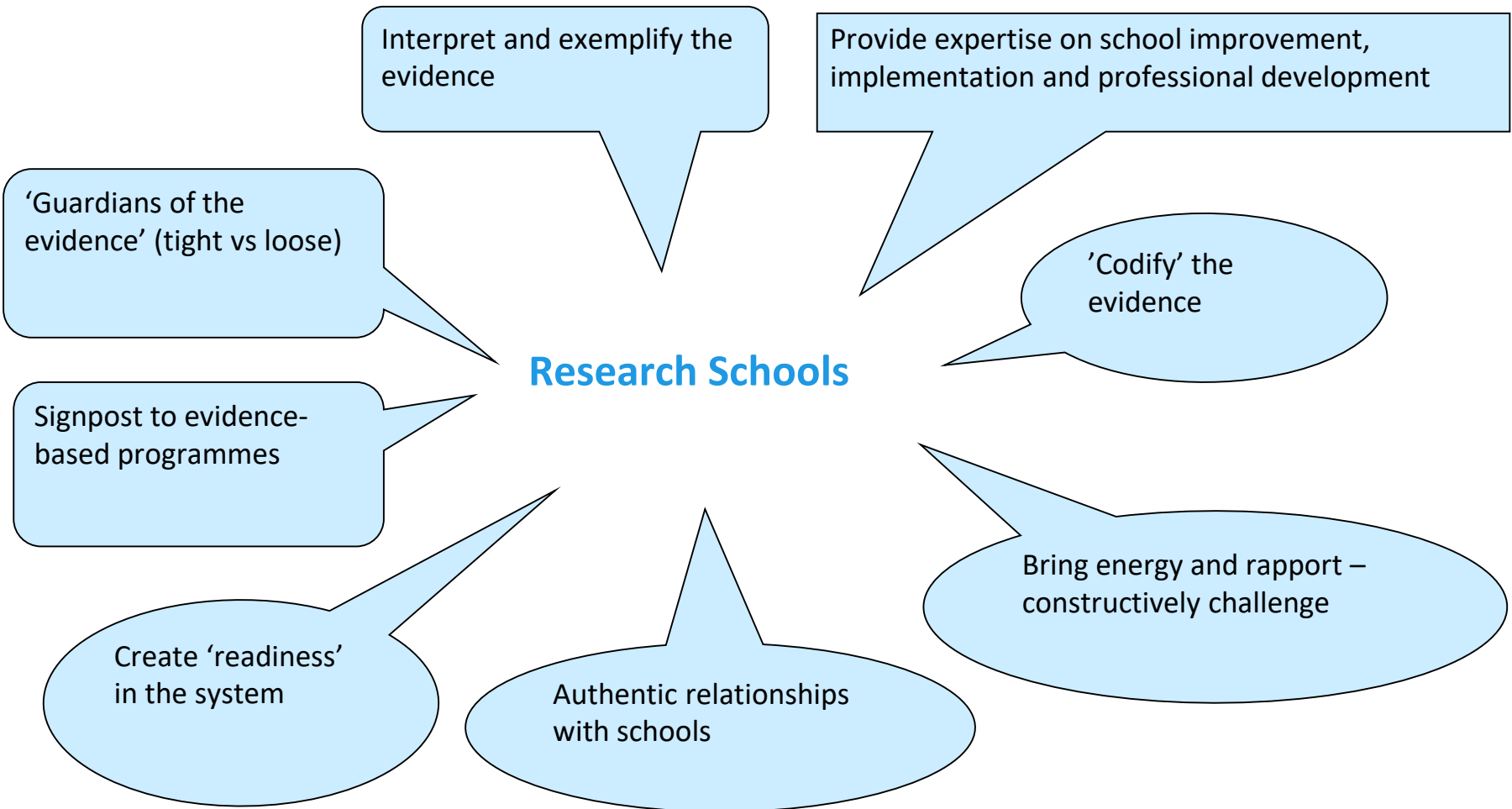
Research evidence *supplements* expertise, it does not supplant it.

The role of the Research Schools Network

The Research Schools Network serves as a bridge from the evidence into practice



The need for Research Schools



The importance of effective implementation



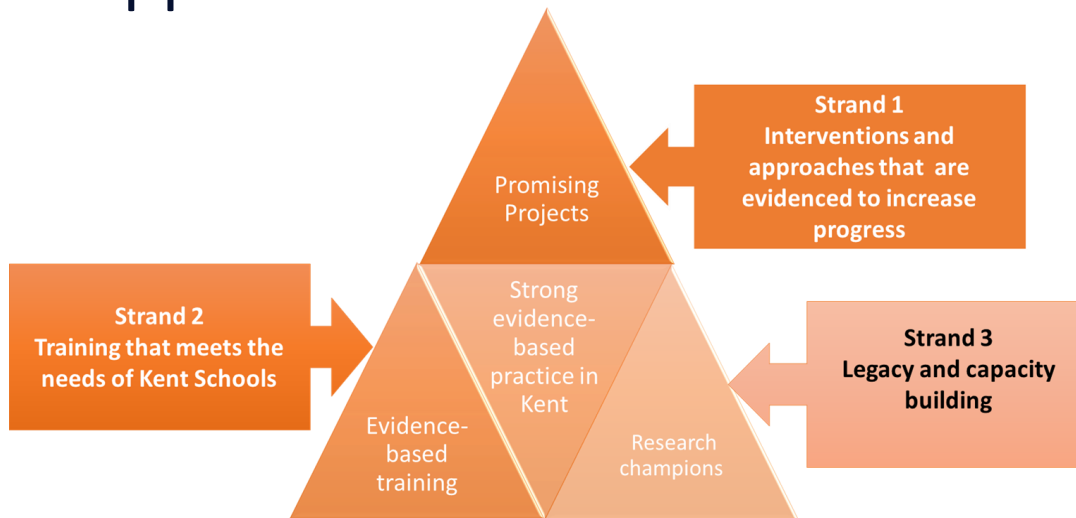
Implementation starts with selecting priorities: doing fewer things well.

“It doesn’t matter how great an educational idea or intervention is in principle; what really matters is how it manifests itself in the day-to-day work of people in schools.”

Dylan Wiliam

The EEFfective Kent Project

- A partnership between KCC & the Education Endowment Foundation (EEF)
- **£600,000** joint funding pot for schools to access to support the implementation of evidence-based approaches.



Three strands of activity

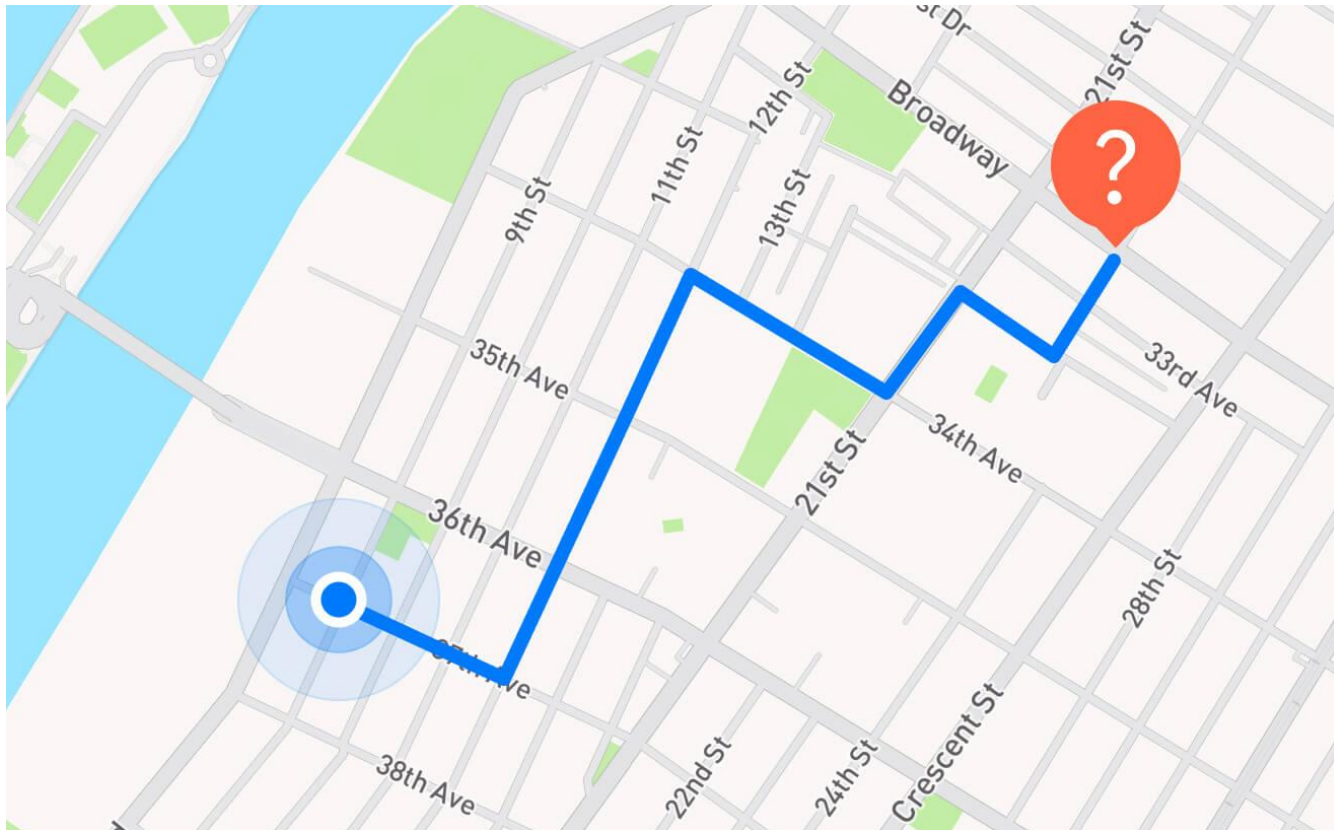
- Promising Projects
- Evidence-Based Training
- Developing Research Champions

Why evidence matters

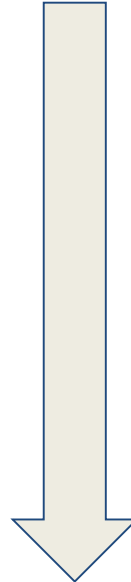
My view is that there is an ethical imperative to provide the best possible classroom conditions in which the students in our charge can flourish. This means rejecting what wastes time and embracing that which makes the most use of it. It's difficult to think of another serious profession that has so wilfully discarded evidence and embraced the transient and the facile as much as education has, and while evidence cannot give us all the answers, it can at least provide us with a roadmap to avoid the dead-ends and backroads of faddism and misinformation.

What does it look like in the classroom?
Carl Hendrick & Robin Macpherson

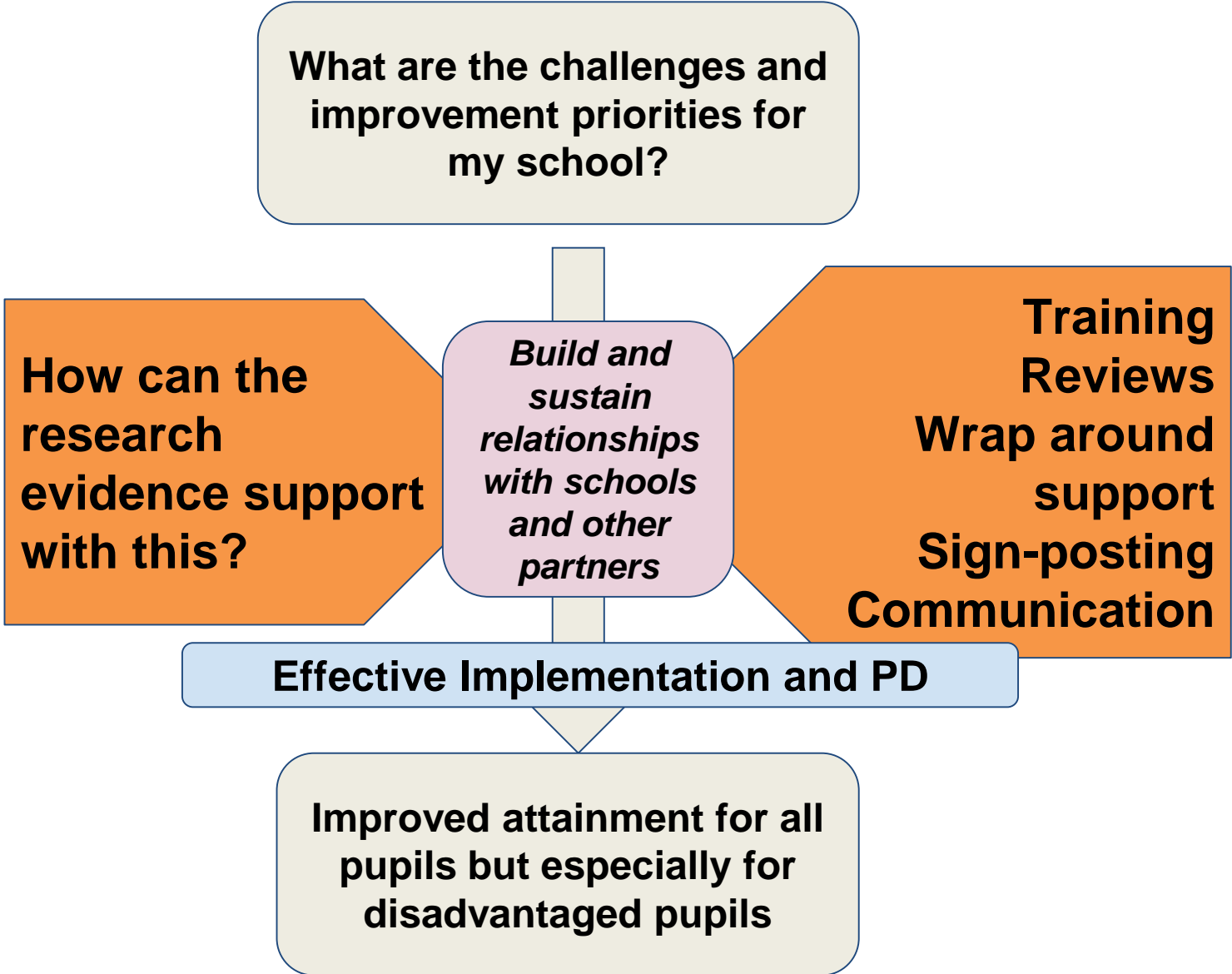
Why evidence matters



What are the challenges and improvement priorities for my school?



Improved attainment for all pupils but especially for disadvantaged pupils



Some FAQs about Research Schools

- Will Research Schools support us with setting up action research projects?
- Do Research Schools carry out research and publish this in journals?
- Are class teachers the best people to attend a Research school training programme?
- Do Research Schools do one off training sessions in schools?
- Is the training led by practising teachers?
- What support is available outside of the training?

Kent Evidence Champions

	Content	Gap task
Session 1 7th March 3.30-5.30	What is an Evidence Champion? Why do schools need one?	Audit current level of research evidence engagement in school.
Session 2 22nd March 3.30-5.30	What sources of evidence are available and how can evaluate their usefulness?	Identify evidence that would be useful for your school improvement priorities.
Session 3 25 April 3.30-5.30	How can schools effectively mobilise this research evidence and evaluate its impact	Implementation planning

Summer

Face to face networking event - Kingsnorth

Filters

Multi-Day Training

All Themes

All Guidance Reports

07 Mar

Modules - 7th March 2022 3:30pm - 5:30pm

online

Kent Evidence Champions Training

Training for Evidence Champions in Kent Schools

free



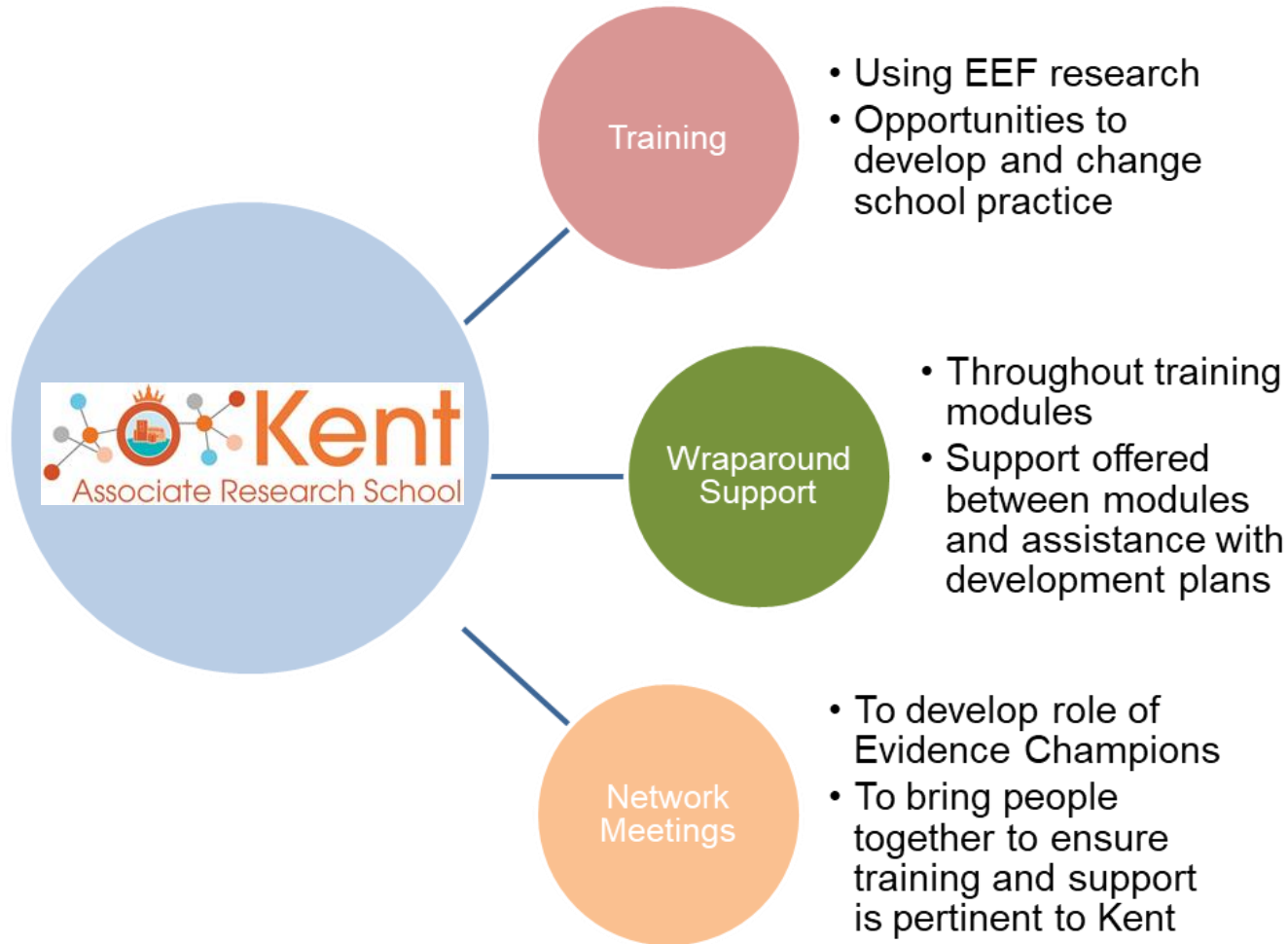
Kent Associate Research School



Our Objectives

- To establish new partnerships with local schools
- To support Durrington and the EEF in their mission to ensure evidence-based research reaches Kent classrooms
- To work with existing projects, such as the EEffective Kent Project and the Kent Research Hub, to create a cohesive, county-wide approach to implementing evidence based practice in schools
- To work with the Research Schools Network to further develop Evidence Champions in schools in Kent
- To provide effective guidance by promoting evidence-based practice

What We Can Offer



Upcoming Events

DATE	EVENT	CONTENT
Thursday 10 th March 2022 4pm-5pm	FREE TASTER SESSION SEND in Mainstream Schools: Online Event	<ul style="list-style-type: none"> -To consider five evidence-based recommendations related to supporting SEND students -To examine how the 'assess, plan, do, review' graduated approach can build an ongoing, holistic view of students and their needs -To examine practical ideas, based on research, to use in the classroom in order to best support SEND students
Thursday 17 th March 2022 4pm-5pm	FREE TASTER SESSION Metacognition and Self- Regulated Learning: Online Event	<ul style="list-style-type: none"> -Discussing and developing a shared definition and understanding of metacognition and self-regulated learning -Looking at practical case studies from schools -Applying principles of metacognition to the classroom, including assessment ideas and teaching techniques
Thursday 24 th March 2022 4pm-5pm	FREE TASTER SESSION Improving Literacy in KS2: Online Event	<ul style="list-style-type: none"> -How to encourage teachers to apply an evidence-based approach to teaching and learning within classrooms -A discussion around the EEF Guidance Report and the evidence-based recommendations -Guidance on how to implement the strategies and recommendations in school
Summer	Network Meeting for Evidence Champions: Face to Face Event	-Meeting together post-training sessions to consider 'what's next?' in Kent schools

Looking Further Forward

- Network Meeting – after the Taster Sessions to meet and discuss
- Programme of training and support from 2022-2023

