



# Kingsnorth

Church of England Primary School

## Newsletter

English Hubs  
Kingsnorth English Hub  
Where every child loves to read



15<sup>th</sup> March '19  
NO: 301

# SIAMS

WE ARE AN OUTSTANDING CHURCH SCHOOL.

### What is on next week?

#### Friday 15<sup>th</sup> March '19

19:30 YR 6 Leavers Do meeting at the Queens Head Pub tonight. Please come along.

#### Monday 18<sup>th</sup> March '19

12:15 YR 5/6 Kendama Club  
12:15 All Yrs Homework Club.  
15:15 YR 4-6 Choir Club  
15:15 -16:15 CANCELLED YR 3/4 Recorder club.  
15:15 -16:15 Football Team Club  
15:15 - 16:15 Mr T Football team Club.

#### Tuesday 19<sup>th</sup> March '19

15:15 YR 3 & 4 Yoga Club.  
15:30 Football Match at home Kingsnorth v Willesborough.

#### Wednesday 20<sup>th</sup> March '19

12:15 - 12:45 YR 2/3 Artsaward Club.  
15:15 YR R & 1 Yoga Club.

#### Thursday 21<sup>st</sup> March '19

10:00 - 10:15 2G Class Assembly.  
12:15 - YR 2/3/4 Rockstars Timetables.  
12:15 YR R/1 Storytime Club.  
13:00 YR 5 Swimming.  
15:15 - 16:30 Gymnastics Club.

#### Friday 22<sup>nd</sup> March '19

12:15 YR 4/5/6 Netball Club.  
14:00 PFA AGM in old school hall.  
15:15 - YR 3/4 Hockey Club.  
15:15 - YR 2 SAT's revision guide meeting and also a chance for parents to look through YR 2 books.  
15:15 - YR 6 Parents welcome into classroom to look through children's books. 15:30

### House Points

Becket	2072
Dickens	2045
Churchill	1998
Harvey	2088
Holmes	2058
Shakespeare	1992



- Daniel S has passed his stage 5 & 6 in swimming.

## Dance Competition

On Thursday two teams went along to The John Wesley School to compete in a Dance Competition between local schools.

The year 5 team came 4<sup>th</sup> and the year 6 team came 3<sup>rd</sup> and were awarded bronze medals.

Well done to all the children who took part.



## Red Nose Day

Today you have helped us raise an amazing

# £445.20

Thank you so much.



Please be careful of the pothole on the crossing between the old school building and the village hall, we have reported it again this week.

## Accelerated Reader<sup>®</sup> Millionaire

Sinead R  
**500,000**  
Leo R, Oliver M, Jessica R & Leo D

## Excellence in Reading Award

### 5H

Most improved % pass rate this week!

Great Reading 5H.

*Composer for the next week is:*

*Richard Wagner*  
(22 May 1813 - 13 Feb 1883)



*German composer, theatre director and conductor who is known for his operas.*



Dear God, thank you for your constant guidance and support through out our lives. Please help us to overcome any challenges that we may face and to help others with their challenges when we can. Amen



### Dates to remember...

#### Monday 25<sup>th</sup> March '19

10:30 YR R Mother's Day Event.

#### Tuesday 26<sup>th</sup> March '19

10:30 YR R Mother's Day Event

#### Wednesday 27<sup>th</sup> March '19

15:15 CANCELLED YR R & 1 Yoga

#### Saturday 30<sup>th</sup> March '19

15:00 - 17:00 PFA Easter Bingo. Details to follow.

#### Friday 5<sup>th</sup> April '19

1:30 Spring term 4 ends School finishes early.

#### Tuesday 16<sup>th</sup> April '19

16:00 Parents will receive Primary School places today.

#### Monday 22<sup>nd</sup> April '19

Bank Holiday - No School

#### Tuesday 23<sup>rd</sup> April '19

Start of Term 5 begins

#### 27<sup>th</sup> April '19

10:00 - 16:00 The North School Spring Fair.

#### 29<sup>th</sup> April - Fri 3<sup>rd</sup> May '19

Bikeability YR 5 - for those who have signed up.

#### 1<sup>st</sup> May '19

18:30 Next Parent Forum, everyone welcome.

#### Thursday 16<sup>th</sup> May '19

YR1 Leeds Castle Trip. Letter to follow later with full details.

#### Tuesday 21<sup>st</sup> May '19

09:00 - 11:30 KS1 YR R, 1,2 Sports Day  
13:00 - 15:10 KS1 YR 3, 4, 5 & 6 Sports Day.

#### Friday 24<sup>th</sup> May '19

Reserve Sports Day

#### Thursday 6<sup>th</sup> June '19

10:00 - 10:15 1A Class Assembly,

#### Tuesday 11<sup>th</sup> June '19

YR 2 Brockhill Country Park trip Letter to follow later with full details.  
YR 4 Otterden Estate Trip Letter to follow later, with full details.

#### Friday 5<sup>th</sup> July '19

YR 6 Leavers Do - More details to follow,

### Kent Play Clubs

Require staff to work at Kingsnorth School from 3pm - 6pm weekdays. For more information please contact KPC on 01233 713813 or email [info@kentplayclubs.org.uk](mailto:info@kentplayclubs.org.uk)

Main Office: 01233 622673  
Email: [office@kingsnorth.kent.sch.uk](mailto:office@kingsnorth.kent.sch.uk)  
Breakfast Club: [administration@kingsnorth.kent.sch.uk](mailto:administration@kingsnorth.kent.sch.uk)  
Nourish Catering: Jackie [kitchen@kingsnorth.kent.sch.uk](mailto:kitchen@kingsnorth.kent.sch.uk)

Website: [www.kingsnorth.kent.sch.uk](http://www.kingsnorth.kent.sch.uk)  
Mobile: 07541 316018 / 07933 251456  
After School Club: Vanessa 07749 280043 / 01233 713813  
KMAC Uniform: [www.kentschooluniform.com](http://www.kentschooluniform.com)

## Reflective Thoughts

The Church of England is worldwide. How does it feel being part of a Church of England Primary school?



### Kingsnorth Community Cafe (The Pavilion, Church Hill )

Welcomes you Monday to Wednesday 12.30-4 pm  
Refreshments, homemade cake and light bites always available.

We aim to support the local community and welcome new volunteers; maybe you can spare an hour or two?

We also put on special events and are happy to support members of the community too (perhaps you have a charity that needs a little boost/awareness)

You can follow us on Facebook (Kingsnorth Community Cafe) or pop in to see us to check out what is going on.

We would love to see you.



Specsavers are now offering a triage service for eye injuries working online with the nhs to save the demands on A&E.

Simply ring your local Specsavers if you have a concern and they will advise you of the course of treatment needed.

Do not forget to use the following when purchasing online. This helps raise money for our School.

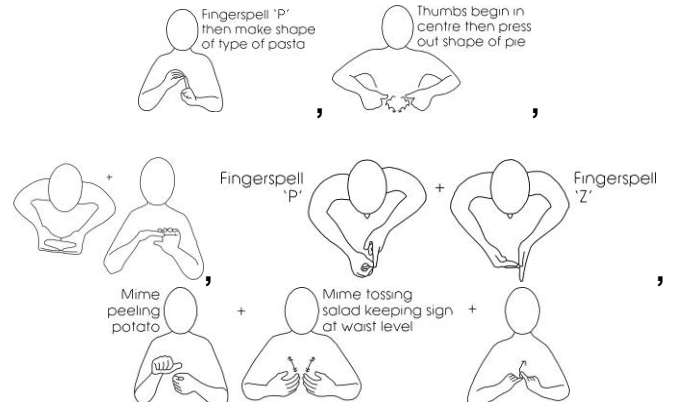


<https://www.easypfundraising.org.uk/causes/kingsnorthlibraryfund/>

## Makaton signs that we are learning this week



### Pasta, Pie, Pitta, Pizza, Potato Salad.



Please can you only park in the disabled bays if you are a **blue badge** holder.



Please do not stop and leave your car in the drop off zone, this causes unnecessary delays in the morning.  
If you wish to walk your child to the door or gates, please park in a designated area.